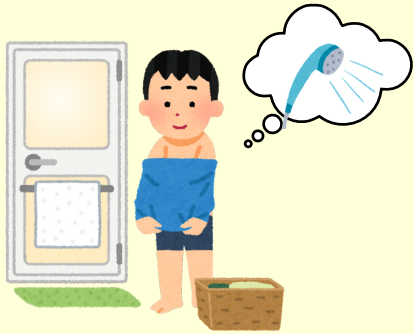


clothes



take off ~
~をぬぐ



get dressed
着替える



wear ~
~を着ている



put on ~
~を着る
~を身につける

What should I wear today?

I'll put on this dress.

きょうは、何を着ようかな。

このワンピースを着よう。



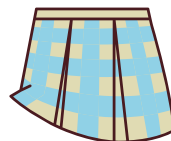
T-shirt



blouse



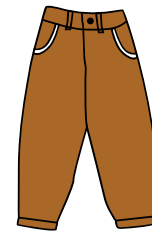
shirt



skirt



jeans



pants



shorts



dress



glasses



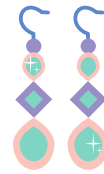
sunglasses



ring



watch



earrings



necklace



bracelet



cap



hat



scarf



handbag



backpack/
rucksack



gloves



mittens



socks



sandals



sneakers



shoes



boots



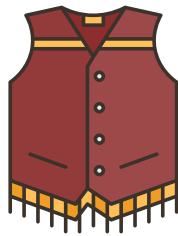
rainboots



pajamas



swimsuit/
bathing suit



vest



sweater



cardigan



jacket



coat